



# OTEFAL INGEGNERIA

**TECHNOLOGY AND INNOVATION IN SUBLIMATION SINCE 2004**

# INDEX

Free Cars	p. 02
Sublinova	p. 04
Sublifast	p. 06
OPT 4000	p.08
360° solutions	p. 10
New Projects	p. 12



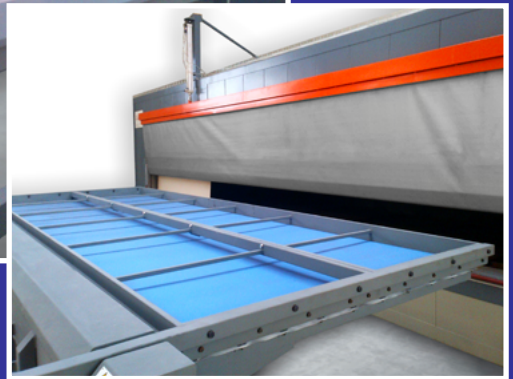
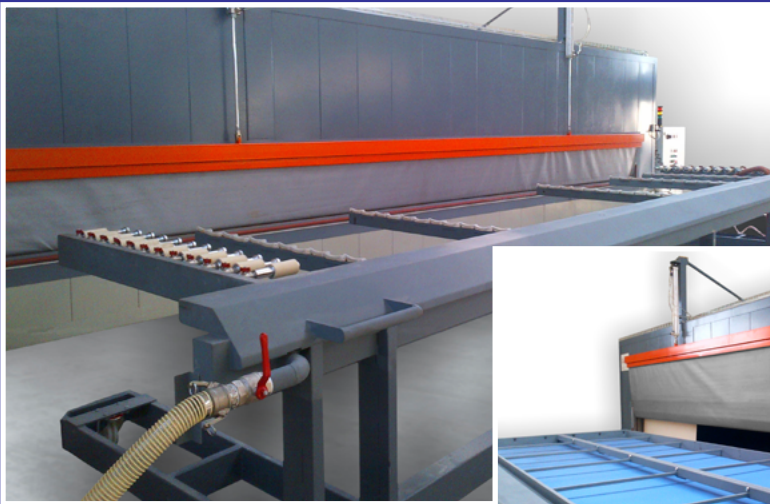
# Free Cars

Free-cars is the “classic” machine for sublimation.

The operators, after the bagging operations (that could be in line or manual), loads the profiles (or the sheets) over a trolley with wheels.

Then the aluminum profiles (or sheets) are pushed inside the oven where the temperature increases until the right sublimation point. Once sublimated, the workers bring out the trolley from the oven, remove the film and unload the sublimated profiles.

Due to its features, “Free-cars” is a device very easy to use and extremely flexible.

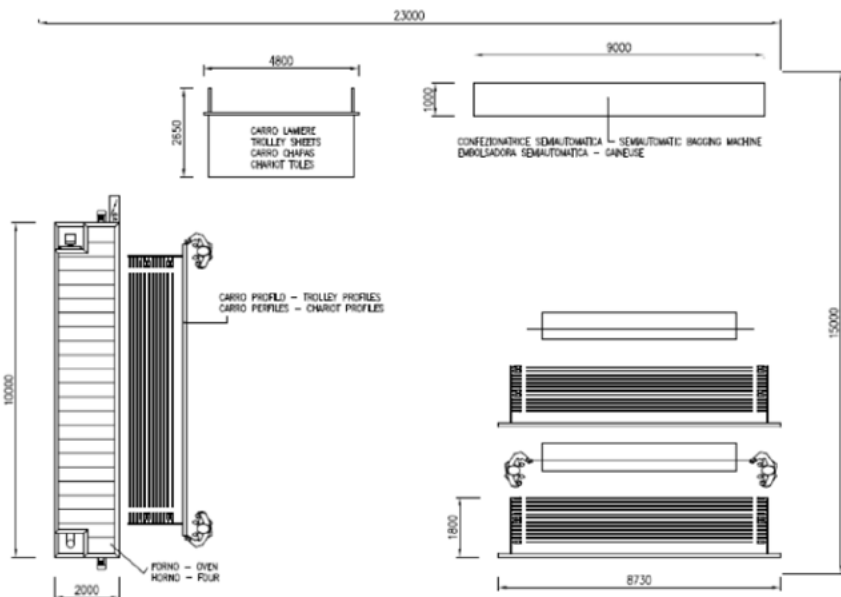


- ✓ FLEXIBILITY
- ✓ EASY TO USE
- ✓ COST
- ✓ PROFILES, FLAT AND EMBOSSED SHEETS



# Free Cars

Model	free Cars
Machine description	1 oven + trolleys + bagging machine
Process	not automatic
Handling profiles in oven	in/out same side
Oven dimensions (mm)	10.000 x 2.000
Plant area	23.000 x 15.000
Heating system	natural gas, GPL, electric
Profiles sublimated (mm)	max 7.200
Sheets (flat and embossed)	yes
Productivity (profiles/h)	30 - 70
Operators	3 - 8
Bagging machine	aut/semi, not in line



# Sublinova

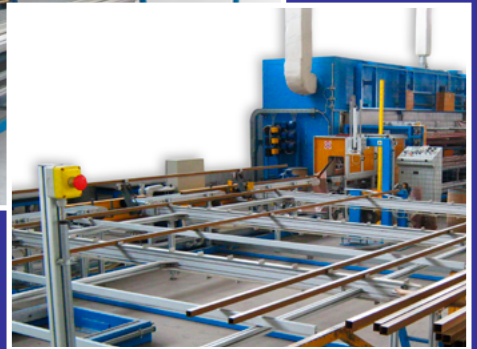
Sublinova is the sublimation plant realized to maximize the production reducing the number of workers over the line.

The profile is loaded on the accumulator of the bagging machine; then it is «bagged» and sent automatically to the loading area of the oven where the operators place it in a mobile drawer that enters automatically (pushing a button) inside the oven.

The main peculiarity of Sublinova is the oven with 3 drawers integrated and 3 possible positions: loading, cooking and cooling.

The same 2 operators, once finished the operation of loading, will download the profiles that in the meantime will have finished the sublimation.

In this way it is possible to run the production with only 2-3 operators working.

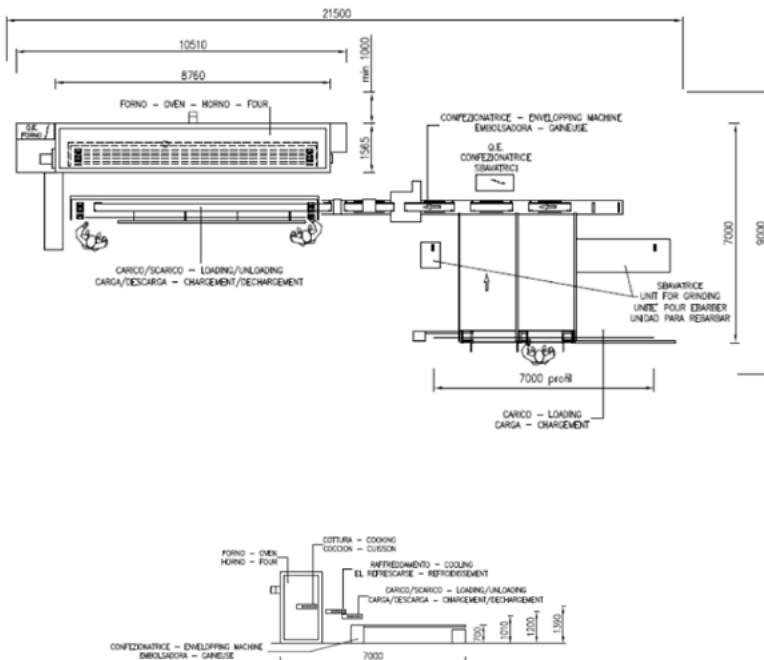


- ✓ WORKFORCE OPTIMIZATION
- ✓ PRODUCTIVITY
- ✓ COMPACT LAY OUT
- ✓ LINEAR WORKING PROCESS



# Sublina

Model	subli- Nova
Machine description	1 oven + bagging machine
Process	automatic
Handling profiles in oven	in/out same side
Oven dimensions (mm)	10.500 x 1.565
Plant area	21.500 x 9.000
Heating system	natural gas, GPL, electric
Profiles sublimated (mm)	max 7.200
Sheets (flat and embossed)	no
Productivity (profiles/h)	40 - 80
Operators	2 - 3
Bagging machine	automatic, in line



# Sublifast

Sublifast, in the 2 version (light and HD), is an automatic plant for sublimation, designed to maximize the production. The profile is loaded on the accumulator of the bagging machine; then it is «bagged» and sent to the loading area where 2/3 operators load it in the chain that brings it inside the oven where it is sublimated; the profile will exit on the other side of the oven where, after cooling, 2 operators will download it from the machine. In Sublifast, the profile cross the oven from one side to the other slowly and in perfectly stable condition of temperature thanks to the balance of the oven due to its perfect simmetry (central burner); this allows to keep the highest level of production with the highest standard of quality.

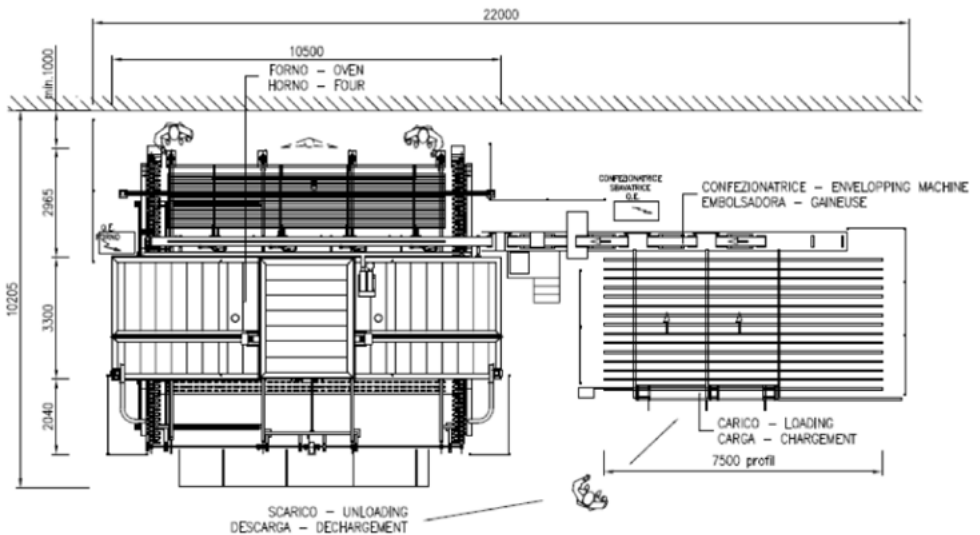


- ✓ HIGH PRODUCTIVITY
- ✓ HOMOGENITY OF PRODUCTION
- ✓ EASY MAINTENANCE
- ✓ EASY TO USE



# Sublifast

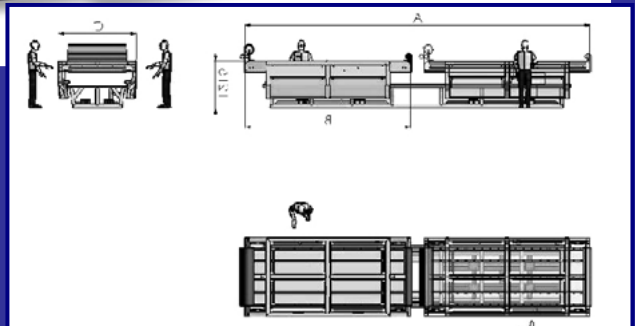
Model	sublifast
Machine description	1 oven + bagging machine
Process	automatic
Handling profiles in oven	crossing
Oven dimensions (mm)	10.500 x 3.300
Plant area	22.000 x 10.200
Heating system	natural gas, GPL, electric
Profiles sublimated (mm)	max 7.200
Sheets (flat and embossed)	no*
Productivity (profiles/h)	120 - 170
Operators	4 - 5
Bagging machine	automatic, in line





# OTP 4000

Designed for the sublimation of the flat sheets, OTP 4000 is the right solution to maximize production reducing times and costs. With a table of more than 8 lm long (divided in 2 parts of 4,30 lm long each), the device can sublimate up to 2 sheets 2 lm long together. Thanks to the electrical heating system, the sheets can reach the sublimation temperature in a very short time. The translating upper plate, allowed to the operators to fix the sheets on one side meanwhile on the other side of the plate the sheets are already sublimating. Compared to a traditional oven, for the sublimation of the sheets, OTP 4000 looks smart, easier and faster.

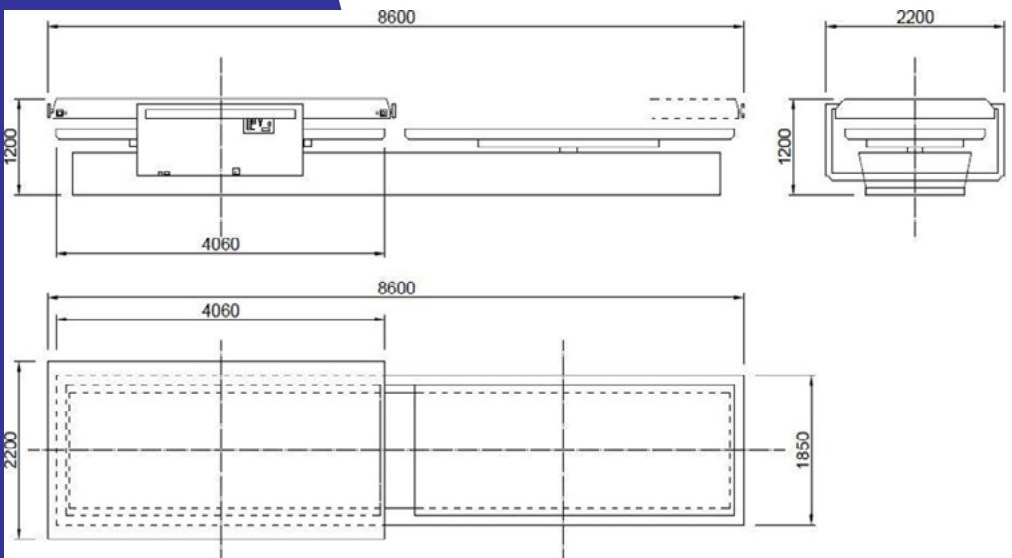


- ✓ SMART
- ✓ FAST
- ✓ FLAT SHEETS



# OTP 4000

Model	OTP 4000
Machine description	flat Press
Process	automatic (programming and preset)
Handling sheets	1 table, 2 plates under, 1 plate up (translating)
Press dimensions (mm)	8.600 x 2.200
Plate dimensions (mm)	4.300 x 1.600
Heating system	electric
Sheets (flat and embossed)	flat
Productivity (sheets/h)	20 - 30 presses
Operators	2



# 360° solutions



With almost 20 years experience in the world of sublimation and metal decoration, Otefal can propose and suggest the best solution for all the customer's needs in terms of reliance and customization.



# 360° solutions



# New Projects

**In march 2023 Sublitex officially entered in the share capital of Otefal.**

The 2 companies are currently working in the developement of a new range of machines for sublimation with the aim of fixing a new target in the world of technology for Decoration.

Sublinova, with the last updates, is already now an important solution for all the decorators that needs to join the highest standard of production capacity and quality with the lowest employment of workers.

Soon there will be other important news... Let's keep in touch!





**OTEFAL INGEGNERIA**

Viale Monza, 338

20128 Milano (MI) - Italy

Tel. +39 / 02 84075242 - 230

E-mail: [info@otefalingegneria.net](mailto:info@otefalingegneria.net)

PEC: [otefalingegneria@pec.it](mailto:otefalingegneria@pec.it)

C.F. - P.IVA: 09298960965

Registro imprese: 09298960965

Rea: MI-2081833

**PARTNER OF**

**SUBLITEX**  
**Architectural**

Strada Tagliata, 25

12051 Alba (CN) - Italy

Tel. +39 / 0173 298741

E-mail: [sublitex.architectural@miroglio.com](mailto:sublitex.architectural@miroglio.com)

[www.sublitexarchitectural.com](http://www.sublitexarchitectural.com)